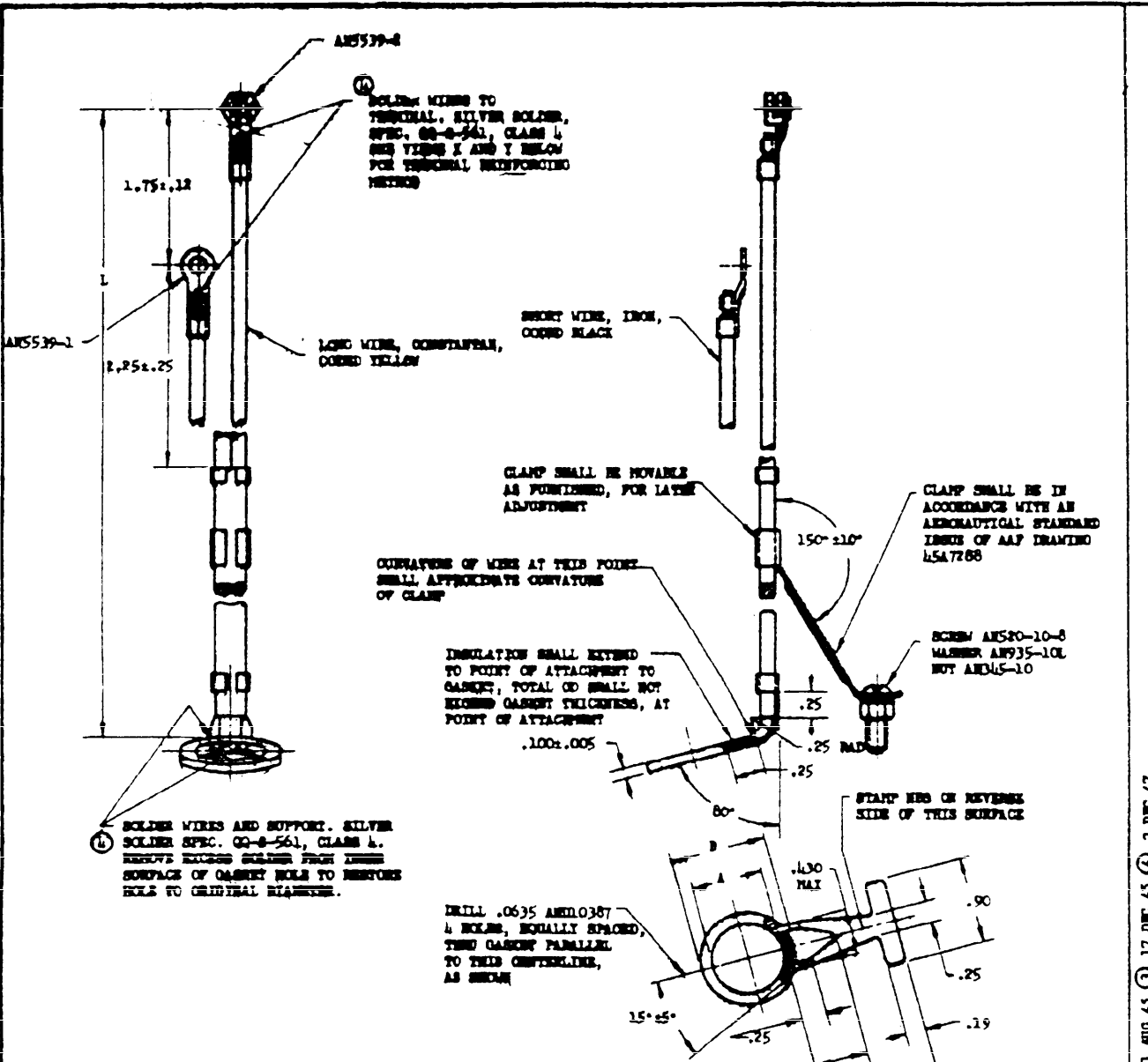


NOTE: When these drawings are used for the purpose of manufacturing parts, the following information should be noted: 1. All dimensions are in inches unless otherwise specified. 2. All dimensions are given to the nearest thousandth of an inch unless otherwise specified. 3. All dimensions are given to the nearest hundredth of an inch unless otherwise specified. 4. All dimensions are given to the nearest tenth of an inch unless otherwise specified. 5. All dimensions are given to the nearest inch unless otherwise specified. 6. All dimensions are given to the nearest millimeter unless otherwise specified. 7. All dimensions are given to the nearest centimeter unless otherwise specified. 8. All dimensions are given to the nearest meter unless otherwise specified. 9. All dimensions are given to the nearest kilometer unless otherwise specified. 10. All dimensions are given to the nearest mile unless otherwise specified.



AN PART NO.	L	GASKET HETAL DIA		CORRESPONDING SPARK PLUG SIZE
		A	B	
AN5540-2	12.00	.719	.970	18 HW
AN5540-3	12.00	.560	.810	1 1/2 HW

MATERIAL: GASKET: COPPER, SOFT SHEET, SPEC QQ-8-501. REINFORCEMENT CLAMP AT GASKET: STEEL, SPEC AN-QQ-8-757, THICKNESS .050±.005 (18 GAUGE). INSTALLATION CLAMP: STEEL, SPEC AN-QQ-8-757, THICKNESS .031±.004 (22 GAUGE).  
 INSULATION CLAMP: STEEL, SPEC AN-QQ-8-757, LENGTH .75 MAX, THICKNESS .025±.010.  
 DIMENSIONS IN INCHES. UNLESS OTHERWISE SPECIFIED, TOLERANCES: TWO PLACE DECIMALS±.02, THREE PLACE DECIMALS±.010, ANGLES±2°.

PROCUREMENT  
 SPECIFICATION  
 AN-7-76

ARMY-NAVY AERONAUTICAL STANDARD  
 THERMOCOUPLE-AIRCRAFT ENGINE GASKET TYPE

**AN5540**

SUPERSEDES AAF DRAWINGS L066780,  
 L066781, L066782, L066783, L066784,  
 AND L066785  
 SUPERSEDES AMDL0200

APPROVED 7 SEPT 43 REVISED 18 MAY 44 31 AUG 45 17 DEC 45 2 DEC 47