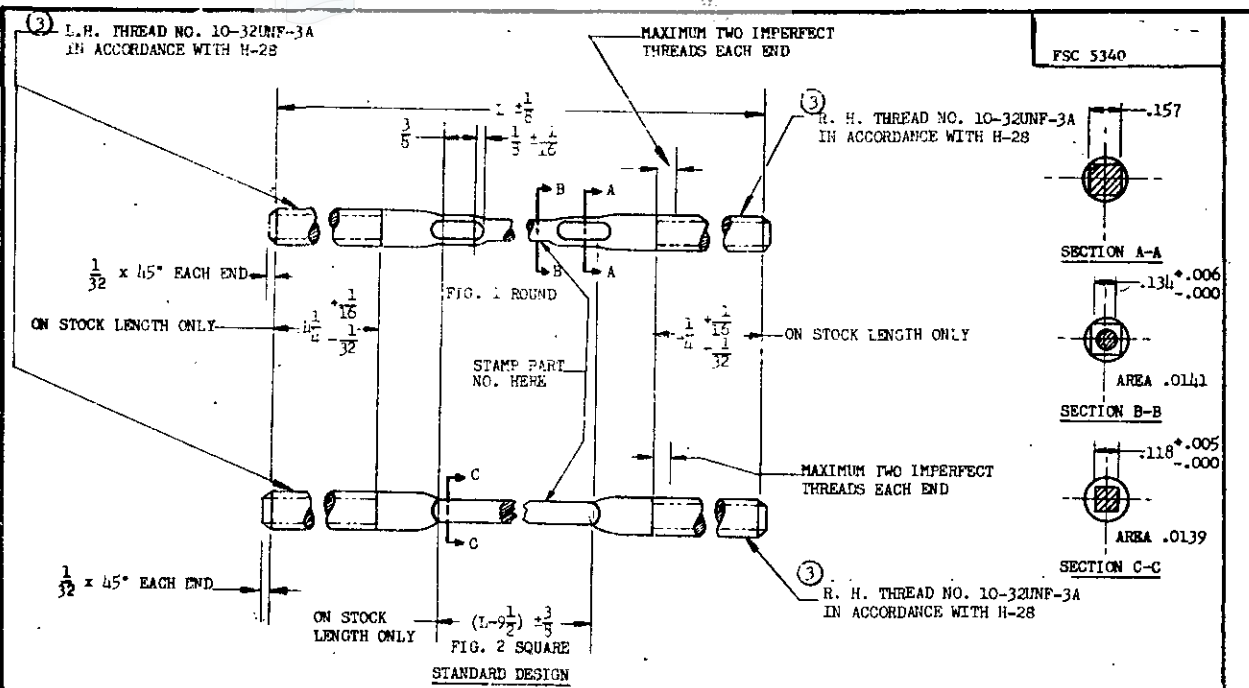
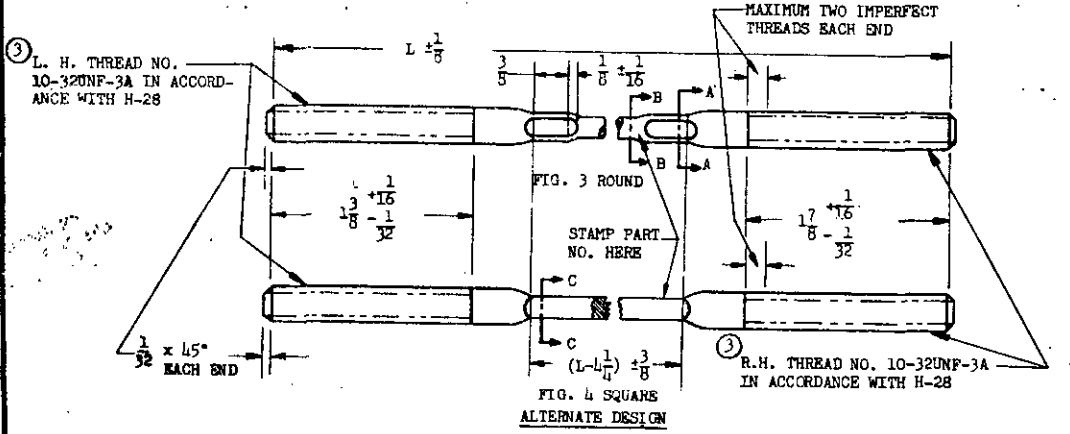


... are Government drawings, specifications, or other data are used for any purpose other than in connection with a definitely related Government contract, the United States Government thereby incurs no responsibility, nor any obligation whatsoever; and the fact that the Government may have furnished, furnished, or in any way applied this data, drawings, specifications, or other data is not to be regarded as an authorization in any manner assuming the liability or any other person or corporation, or conveying any rights or permissions to manufacturers, less, or sell any material or information that may in any way be related thereto.

NOTE: This drawing was prepared by John J. ... in the ... and Navy Departments in the ... Very ... for the ... This drawing represents an ... for the same product and should ... for the ... This drawing represents an ... for the same product and should ... for the ... This drawing represents an ... for the same product and should ... for the ...



DASH NO.	L	DASH NO.	L	DASH NO.	L	DASH NO.	L	DASH NO.	L	DASH NO.	L	DASH NO.	L	DASH NO.	L	DASH NO.	L	DASH NO.	L		
18	18	42	42	66	66	90	90	114	114	138	138	162	162	186	186	210	210	234	234	258	258
24	24	48	48	72	72	96	96	120	120	144	144	168	168	192	192	216	216	240	240	264	264
30	30	54	54	78	78	102	102	126	126	150	150	174	174	198	198	222	222	246	246	270	270
36	36	60	60	84	84	108	108	132	132	156	156	180	180	204	204	228	228	252	252	276	276



**MATERIAL:** CARBON STEEL. CORROSION RESISTING STEEL. SEE PROCUREMENT SPECIFICATION.

**FINISH:** CADMIUM PLATE, QQ-P-416, TYPE II; CLASS 3.

**THREAD:** MINIMUM THREAD FOR RIGID TERMINAL AND LOCK NUT 1-3/8.

AIRPLANE MANUFACTURERS ARE PERMITTED TO INSTALL RODS WITH MINIMUM LENGTH OF THREADS AS INDICATED IN ALTERNATE DESIGN, ON AIRPLANES SUPPLIED ON GOVERNMENT ORDERS.

LENGTH "L" SHALL BE THE NEAREST 25/100, AS 1825, 1850, 1875, 19, 1925 TO FIT, FIGURING 50% TAKE UP AND 50% LET OUT. TO FIND ROD LENGTH SUBTRACT 1-1/2 FROM LENGTH BETWEEN PIN CENTERS OF ASSEMBLY.

CUT OFF EQUAL AMOUNT FROM EACH END OF STANDARD DESIGN STOCK SIZES FOR INTERMEDIATE LENGTHS.

PART NO. SHALL INDICATE THE EXACT LENGTH OF ROD WITH LETTER "A" AFTER BASIC NO. FOR THE ALTERNATE DESIGN.

RODS OF THE STANDARD DESIGN, WHICH WILL BE USED FOR REPLACEMENT PURPOSES, WILL BEAR THE SAME NO. AS THOSE OF THE ALTERNATE DESIGN, WITHOUT THE LETTER "A".

FOR CORROSION RESISTING STEEL RODS INSERT "C" BEFORE DASH NO.

**EXAMPLE OF PART NOS.:**  
 AN703A3050 = NO. 10-32 ROD, 30-1/2 INCH LONG, ALTERNATE DESIGN, CARBON STEEL.  
 AN703-3050 = NO. 10-32 ROD, 30-1/2 INCH LONG, STANDARD DESIGN, CARBON STEEL.  
 AN703C3050 = NO. 10-32 ROD, 30-1/2 INCH LONG, STANDARD DESIGN, CORROSION RESISTING STEEL.

REMOVE ALL BURRS AND SHARP EDGES.

**DIMENSIONS** IN INCHES. UNLESS OTHERWISE SPECIFIED, TOLERANCES ON FRACTIONS ±1/64, DECIMALS ±.010, ANGLES ±1/2°.

CANCELED AFTER 30 NOV 1981  
 NO SUPERSEDING STANDARD.

APPROVED 2 Sep 42 REVISED 24 Jun 43 8 May 51 15 Jun 66 14 Dec 81

PROCUREMENT SPECIFICATION MIL-T-5684	<b>AIR FORCE-NAVY AERONAUTICAL STANDARD</b> TIE ROD - INTERNAL 2.00 LB (NO.10-32)	<b>AN703</b>
---	--	--------------