

NOTICE OF
CHANGE

INCH-POUND

MIL-STD-348A
 NOTICE 5
 18 November 2002

DEPARTMENT OF DEFENSE
 INTERFACE STANDARD
 RADIO FREQUENCY CONNECTOR INTERFACES FOR
 MIL-C-3643, MIL-C-3650, MIL-C-3655, MIL-C-25516,
 MIL-C-26637, MIL-PRF-39012, MIL-PRF-49142,
 MIL-PRF-55339, MIL-C-83517

TO ALL HOLDERS OF MIL-STD-348A:

1. THE FOLLOWING PAGES OF MIL-STD-348A ARE NEW OR HAVE BEEN REVISED AND SUPERSEDE THE PAGES LISTED:

| NEW PAGE | DATE | SUPERSEDED PAGE | DATE | |
|-------------|--------------|-----------------|--|-----------------|
| iii | 21 July 1992 | iii | Reprinted without change 21 July 1992 | |
| iv | | iv | | |
| v/vi | | v/vi | | 12 January 1990 |
| 310.3/310.4 | | 310.3 | | 21 July 1992 |
| 313.3 | | 313.3 | | 12 January 1990 |
| 319.2 | | 319.2 | | 30 June 1998 |
| 326.1 | | 326.1 | | 16 July 1999 |
| 326.1a | | New page | | |
| 326.2 | | 326.2 | | 16 July 1999 |
| 326.3 | | 326.3 | | 16 July 1999 |
| 326.4 | | 326.4 | | 16 July 1999 |
| 327.1 | | New page | | |
| 327.2 | | New page | | |
| 328.1 | | New page | | |
| 328.2 | | New page | | |
| 328.3 | | New page | | |
| 329.1 | | New page | | |
| 329.2 | | New page | | |

2. RETAIN THIS NOTICE AND INSERT BEFORE TABLE OF CONTENTS.
3. Holders of MIL-STD-348A will verify that page changes and additions indicated above have been entered. This notice page will be retained as check sheet. This issuance, together with appended pages, is a separate publication. Each notice is to be retained by stocking points until the standard is completely revised or canceled.

CONCLUDING MATERIAL

Custodians:
 Army - CR
 Navy - EC
 Air Force - 11
 DLA - CC

Preparing activity:
 DLA - CC

 (Project 5935-4323-000)

Review activities:
 Army - AT, AV, MI
 Navy - AS, CG, MC, SH
 Air Force - 99

MIL-STD-348A
 NOTICE 5

CONTENTS

| | <u>Page</u> |
|-------------------------------------|-------------|
| 1. SCOPE | 1 |
| 1.1 Purpose | 1 |
| 1.2 Scope | 1 |
| 2. REFERENCE DOCUMENTS | 2 |
| 2.1 Government documents | 2 |
| 2.1.1 Specification, and standards | 2 |
| 2.2 Order of precedence | 2 |
| 3. DEFINITIONS | 3 |
| 3.1 Terms | 3 |
| 4. GENERAL REQUIREMENTS | 4 |
| 5. DETAILED REQUIREMENTS | 5 |
| 5.1 Gauge tests | 5 |
| 5.2 Marking | 5 |
| 5.3 Drawing notes | 5 |
| 5.4 Change effectivity | 5 |
| 5.5 Disposition of stock | 5 |
| 6. NOTES | 6 |
| 6.1 Intended use | 6 |
| 6.2 Patent notice | 6 |
| 6.3 Subject term (key word) listing | 6 |
| 6.4 Changes from previous issue | 6 |

FIGURES

| | |
|--|-------|
| 101-1. Interface, series TWTNC, coupling nut | 101.1 |
| 101-2. Interface, series TWTNC, no coupling nut | 101.2 |
| 102-1. Interface, series TWBNC, with coupling nut | 102.1 |
| 102-2. Interface, series TWBNC, coupling nut | 102.2 |
| 102-3. Interface, series TWBNC, without coupling nut | 102.3 |
| 103-1. Interface, series TWSMC, with coupling nut | 103.1 |
| 103-2. Interface, series TWSMC, without coupling nut | 103.2 |
| 104-1. Interface, series TWSMB, with coupling mechanism | 104.1 |
| 104-2. Interface, series TWSMB, without coupling mechanism | 104.2 |
| 201-1. Interface, series TRB, pin contact | 201.1 |
| 201-2. Interface, series TRB, socket contact | 201.2 |
| 202-1. Interface, series TRT, pin contact | 202.1 |
| 202-2. Interface, series TRT, socket contact | 202.2 |
| 301-1. Interface, series BNC, pin contact | 301.1 |
| 301-2. Interface, series BNC, socket contact | 301.2 |
| 302-1. Interface, series C, pin contact | 302.1 |
| 302-2. Interface, series C, socket contact | 302.2 |
| 303-1. Interface, series MHV, pin contact | 303.1 |
| 303-2. Interface, series MHV, socket contact | 303.2 |
| 304-1. Interface, series N, pin contact | 304.1 |
| 304-2. Interface, series N, Socket contact | 304.2 |
| 305-1. Interface, series QL, pin contact | 305.1 |
| 305-2. Interface, series QL, socket contact | 305.2 |

REPRINTED WITHOUT CHANGE

MIL-STD-348A
 NOTICE 5

CONTENTS

| | <u>Page</u> |
|---|-------------|
| 306-1. Interface, series QM, pin contact | 306.1 |
| 306-2. Interface, series QM, socket contact | 306.2 |
| 307-1. Interface, series QNC, pin contact | 307.1 |
| 307-2. Interface, series QNC, socket contact | 307.2 |
| 308-1. Interface, series QSC, pin contact | 308.1 |
| 308-2. Interface, series QSC, socket contact | 308.2 |
| 309-1. Interface, series SC, pin contact | 309.1 |
| 309-2. Interface, series SC, socket contact | 309.2 |
| 310-1. Interface, series SMA, pin contact | 310.1 |
| 310-2. Interface, series SMA, socket contact | 310.2 |
| 310-3. Interface, series SMA, no contact | 310.3 |
| 311-1. Interface, series SMB, pin contact | 311.1 |
| 311-2. Interface, series SMB, socket contact | 311.2 |
| 312-1. Interface, series SMC, pin contact | 312.1 |
| 312-2. Interface, series SMC, socket contact | 312.2 |
| 313-1. Interface, series TNC, pin contact | 313.1 |
| 313-2. Interface, series TNC, socket contact | 313.2 |
| 313-3. Interface, series TNCA, pin contact, air interface | 313.3 |
| 313-4. Interface, series TNCA, socket contact, air interface | 313.4 |
| 314-1. Interface, series SHV, pin contact | 314.1 |
| 314-2. Interface, series SHV, socket contact | 314.2 |
| 315-1. Interface, series LC, pin contact | 315.1 |
| 315-2. Interface, series LC, socket contact | 315.2 |
| 315-3. Interface, series LC, pin contact | 315.3 |
| 315-4. Interface, series LC, socket contact | 315.4 |
| 315-5. Interface, series LC, pin contact | 315.5 |
| 315-6. Interface, series LC, socket contact | 315.6 |
| 316-1. Interface, coaxial environment resistant | 316.1 |
| 316-2. Interface, coaxial environment resistant | 316.2 |
| 316-3. Interface, coaxial environment resistant | 316.3 |
| 316-4. Interface, coaxial environment resistant | 316.4 |
| 317-1. Interface, series HN, pin contact | 317.1 |
| 317-2. Interface, series HN, socket contact | 317.2 |
| 318-1. Interface, series LT, no contact | 318.1 |
| 318-2. Interface, series LT, socket contact | 318.2 |
| 319-1. Interface, series SSMA, pin contact | 319.1 |
| 319-2. Interface, series SSMA, socket contact | 319.2 |
| 320-1. Interface, series SSMB, pin contact | 320.1 |
| 320-2. Interface, series SSMB, socket contact | 320.2 |
| 321-1. Interface, series BMA, pin contact | 321.1 |
| 321-2. Interface, series BMA, socket contact | 321.2 |
| 321-3. Interface, dimension table, series BMA | 321.3 |
| 322-1. Interface, series BMB, pin contact | 322.1 |
| 322-2. Interface, series BMB, socket contact | 322.2 |
| 323-1. Interface, series SMK, pin contact | 323.1 |
| 323-2. Interface, series SMK, socket contact | 323.2 |
| 325-1. Interface, series BMZ, pin contact | 325.1 |
| 325-2. Interface, series BMZ, socket contact | 325.2 |
| 326-1. Interface, series SMP, socket contact (uncabled connector) | 326.1 |
| 326-1a Interface, series SMP, socket contact (cabled connector) | 326.1a |
| 326-2. Interface, series SMP, pin contact, full detent | 326.2 |
| 326-3. Interface, series SMP, pin contact, limited detent | 326.3 |
| 326-4. Interface, series SMP, pin contact, smooth bore | 326.4 |
| 326-5. Interface, series SMP, pin contact, catchers mit | 326.5 |
| 327-1. Threaded plug - pin center contact (DBA) | 327.1 |
| 327-2. Threaded plug - socket center contact (DBA) | 327.2 |
| 328-1. SMPM female interface | 328.1 |
| 328-2. SMPM male full detent interface | 328.2 |
| 328-3. SMPM male smooth bore interface | 328.3 |

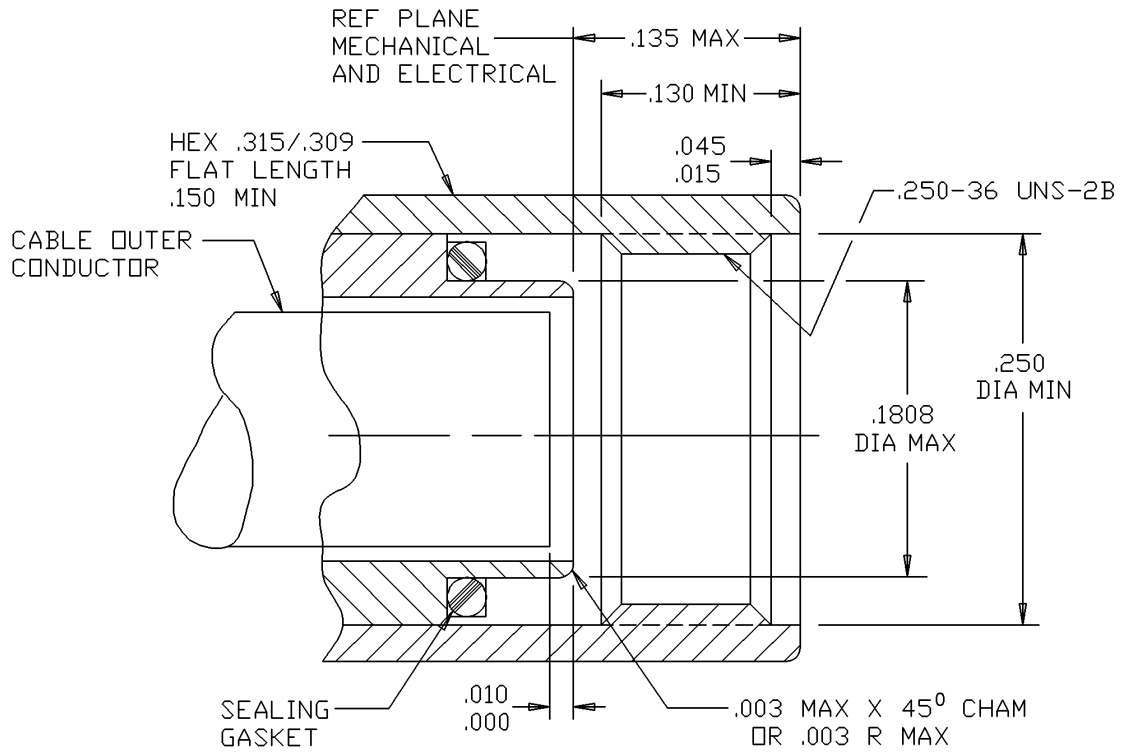
MIL-STD-348A
NOTICE 5

CONTENTS

| | <u>Page</u> |
|--|-------------|
| 329-1. Interface series TK, pin contact | 329.1 |
| 329.2. Interface series TK, socket contact | 329.2 |
| 401-1. Interface, test connector, series C, pin contact | 401.1 |
| 401-2. Interface, test connector, series C, socket contact | 401.2 |
| 401-3. Interface, mated test connector, series C | 401.3 |
| 402-1. Interface, test connector, series N, socket contact | 402.1 |
| 402-2. Interface, test connector, series N, socket contact | 402.2 |
| 402-3. Interface, mated test connector, series N | 402.3 |
| 403-1. Interface, test connector, series SC, pin contact | 403.1 |
| 403-2. Interface, test connector, series SC, socket contact | 403.2 |
| 403-3. Interface, mated test connector, series SC | 403.3 |
| 404-1. Interface, test connector, series BNC, pin contact | 404.1 |
| 404-2. Interface, test connector, series BNC, socket contact | 404.2 |
| 404-3. Interface, mated test connector, series BNC | 404.3 |
| 405-1. Interface, test connector, series SMA, pin contact | 405.1 |
| 405-2. Interface, test connector, series SMA, socket contact | 405.2 |
| 405-3. Interface, mated test connector, series SMA | 405.3 |
| 406-1. Interface, test connector, series TNC, pin contact | 406.1 |
| 406-2. Interface, test connector, series TNC, socket contact | 406.2 |
| 406-3. Interface, mated test connector, series TNC | 406.3 |
| 407-1. Interface, test connector, series SMB, pin contact | 407.1 |
| 407-2. Interface, test connector, series SMB, socket contact | 407.2 |
| 407-3. Interface, mated test connector, series SMB | 407.3 |
| 408-1. Interface, test connector, series SMC, pin contact | 408.1 |
| 408-2. Interface, test connector, series SMC, socket contact | 408.2 |
| 408-3. Interface, mated test connector, series SMC | 408.3 |
| 409-1. Interface, test connector, series QNC, pin contact | 409.1 |
| 409-2. Interface, test connector, series QNC, socket contact | 409.2 |
| 409-3. Gap of mated standard test connector, series QNC | 409.3 |
| 410-1. Interface, test connector, series QSC, pin contact | 410.1 |
| 410-2. Interface, test connector, series QSC, socket contact | 410.2 |
| 410-3. Gap of mated standard test connector, series QSC | 410.3 |

SUPERSEDES PAGE V OF
NOTICE 1

MIL-STD-348A
 NOTICE 5



| Inches | mm | Inches | mm |
|--------|------|--------|------|
| .000 | 0.00 | .135 | 3.43 |
| .003 | 0.08 | .150 | 3.81 |
| .015 | 0.38 | .1808 | 4.59 |
| .045 | 1.14 | .250 | 6.35 |
| .101 | 2.57 | .309 | 7.85 |
| .130 | 3.30 | .315 | 8.00 |

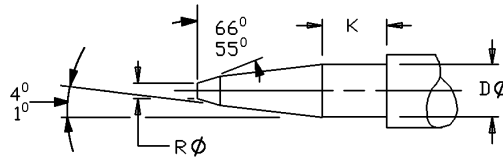
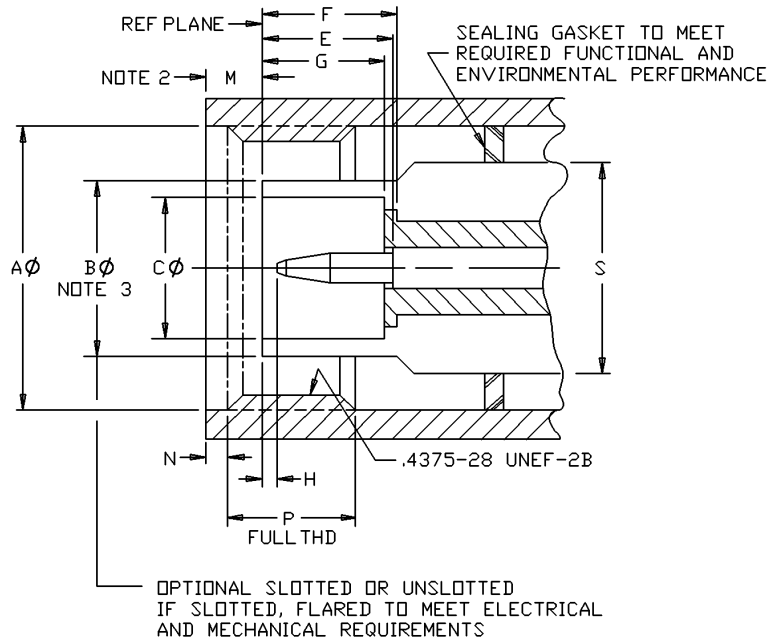
NOTES:

1. Dimensions are in inches.
2. Metric equivalents are given for general information only.
3. Reference MIL-PRF-39012/92 for cable stripping dimensions.

FIGURE 310-3. Interface, series SMA, no contact.

SUPERSEDES PAGE 310.3 OF
 NOTICE 2

MIL-STD-348A
 NOTICE 5



| LTR | Inches | | Millimeter | |
|-----|--------|------|------------|------|
| | Min | Max | Min | Max |
| A | .440 | | 11.18 | --- |
| B | .314 | .318 | 7.98 | 8.08 |
| C | .238 | .242 | 6.05 | 6.15 |
| D | .052 | .054 | 1.32 | 1.37 |
| E | .208 | --- | 5.28 | |
| F | .212 | --- | 5.38 | |
| G | .208 | --- | 5.28 | |
| H | .003 | .040 | 0.08 | 1.02 |
| K | .078 | --- | 1.98 | |
| M | | .078 | | 1.98 |
| N | .063 | | 1.60 | |
| P | .156 | | 3.96 | |
| R | | .025 | | 0.64 |
| S | | .322 | | 8.18 |

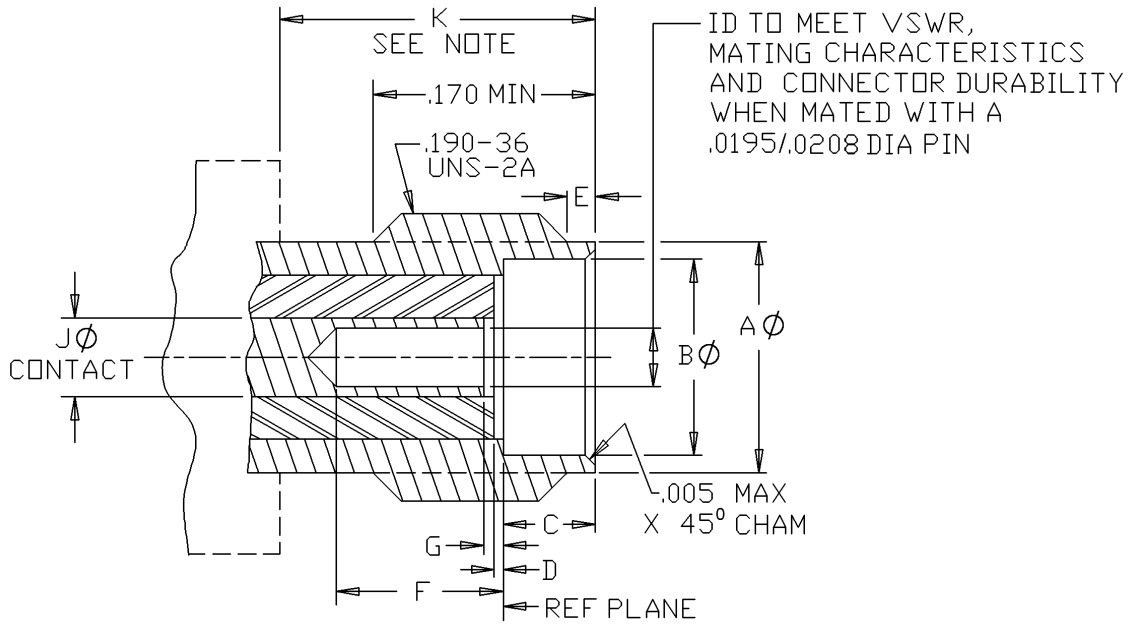
NOTES:

1. Three holes .027 inch minimum diameter equally spaced for safety wiring when required. Location on coupling nut is optional.
2. Dimension with nut bias fully forward.
3. For unslotted version. Slotted designs must meet gauge test, B dimension will not apply.

FIGURE 313-3. Interface, series TNCA, pin contact, air interface.

SUPERSEDES PAGE 313.3

MIL-STD-348A
 NOTICE 5



| Inches | mm |
|--------|-------|
| .005 | 0.13 |
| .0195 | 0.50 |
| .0210 | 0.533 |
| .170 | 4.32 |
| .190 | 4.83 |

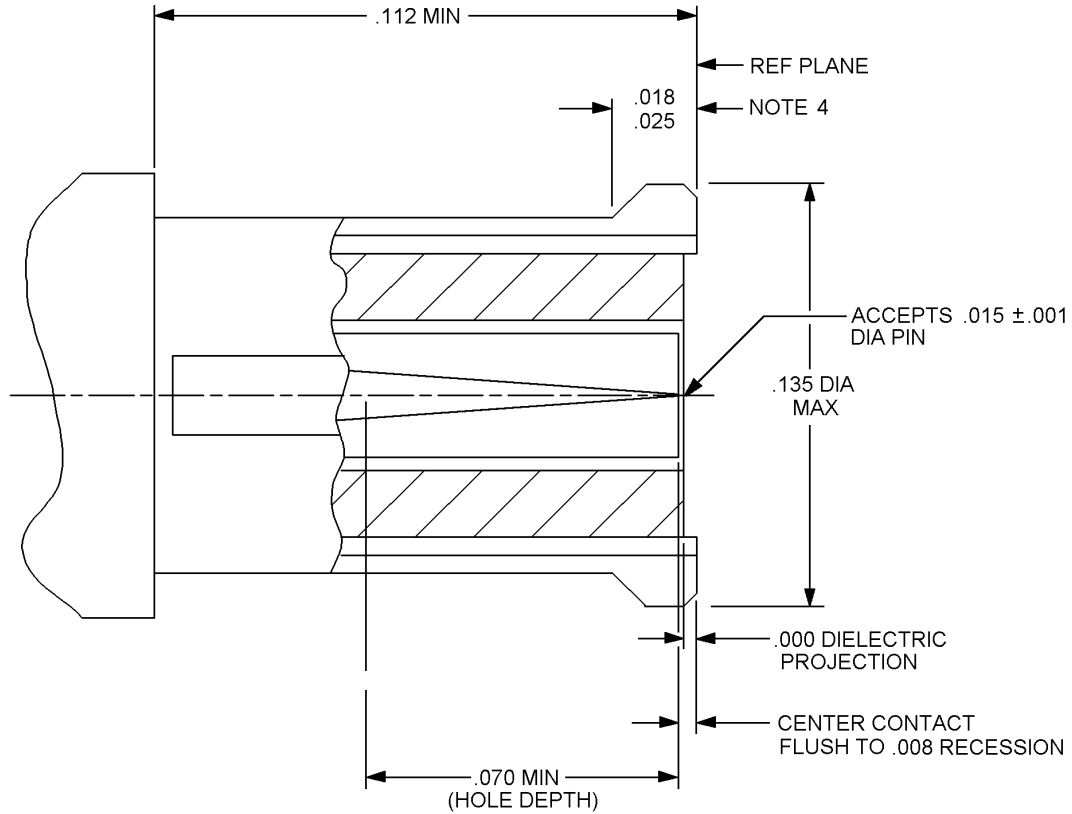
| LTR | Inches | | Millimeters | |
|-----|--------|-------|-------------|-------|
| | Min | Max | Min | Max |
| A Ø | .147 | .160 | 3.89 | 4.06 |
| B Ø | .127 | .130 | 3.23 | 3.30 |
| C | .075 | .077 | 1.90 | 1.96 |
| D | .000 | .010 | 0.00 | 0.25 |
| E | .020 | .040 | 0.51 | 1.02 |
| F | .075 | --- | 1.90 | --- |
| G | .000 | .010 | 0.00 | 0.25 |
| J Ø | .0335 | .0348 | 0.851 | 0.884 |
| K | .230 | --- | 5.84 | --- |

NOTE: Clearance for coupling nut.

FIGURE 319-2. Interface, series SSMA, socket contact.

SUPERSEDES PAGE 319.2 OF
 NOTICE 1

MIL-STD-348A
 NOTICE 5



| Inches | mm | Inches | mm |
|--------|------|--------|------|
| .001 | 0.03 | .025 | 0.64 |
| .008 | 0.20 | .070 | 1.78 |
| .015 | 0.38 | .112 | 2.84 |
| .018 | 0.46 | .135 | 3.43 |

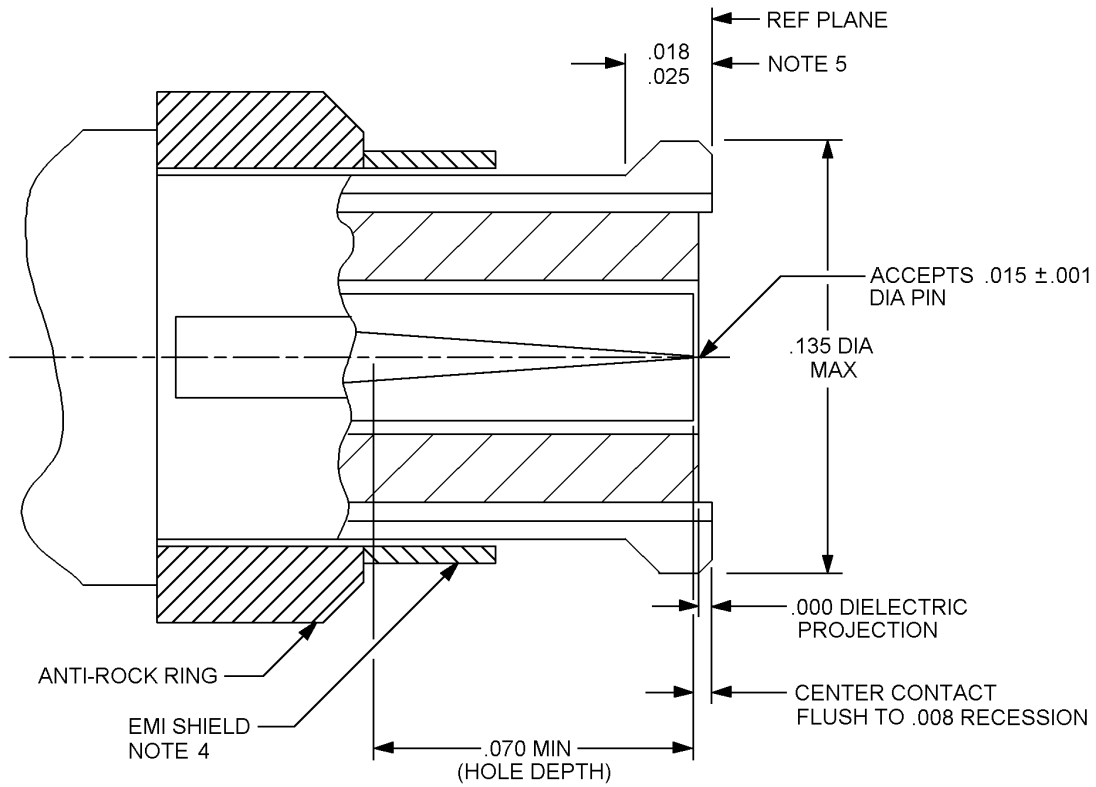
NOTES:

1. Dimensions are in inches.
2. Metric equivalents are given for general information only.
3. Interface shall meet the force to engage and disengage requirements in accordance with DSCC drawing 94008.
4. Form and dimension of outer conductor to meet electrical and mechanical requirements.

FIGURE 326-1. Interface, series SMP, socket contact (uncabled connector).

SUPERSEDES PAGE 326.1 OF NOTICE 4

MIL-STD-348A
 NOTICE 5



| Inches | mm | Inches | mm |
|--------|------|--------|------|
| .001 | 0.03 | .025 | 0.64 |
| .008 | 0.20 | .070 | 1.78 |
| .015 | 0.38 | .135 | 3.43 |
| .018 | 0.46 | | |

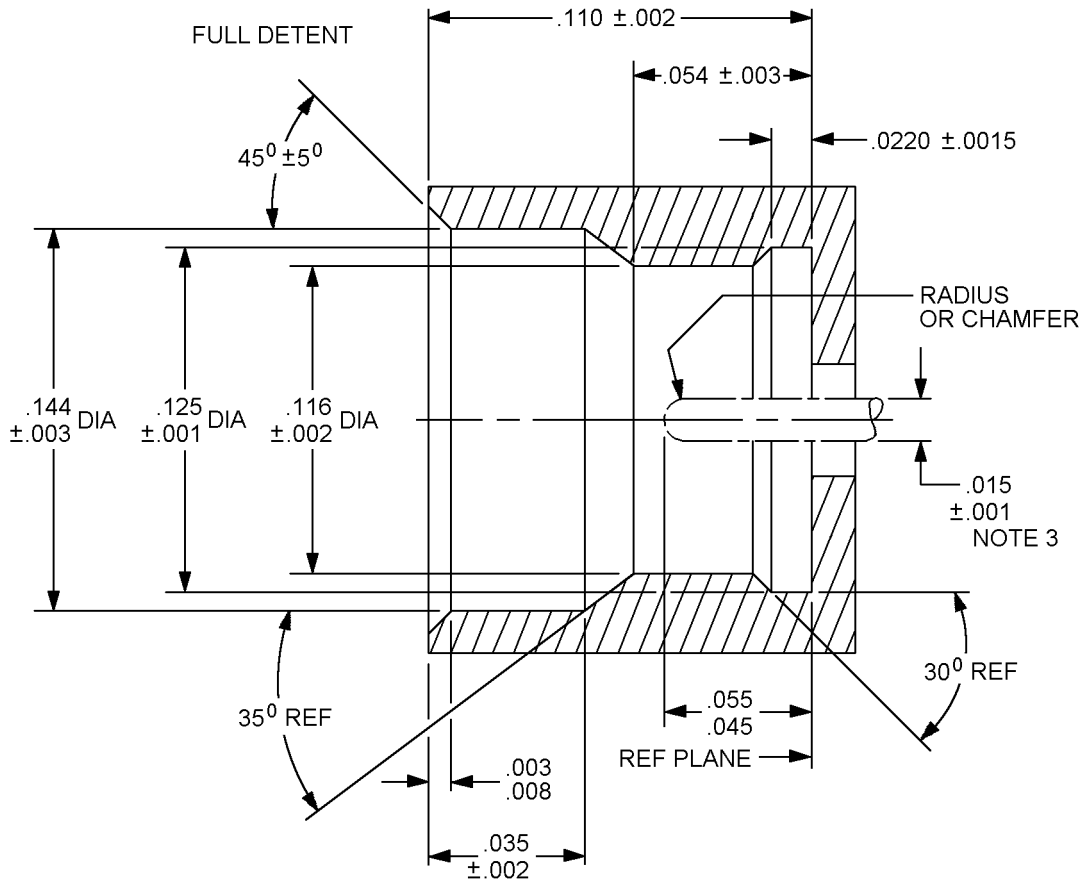
NOTES:

1. Dimensions are in inches.
2. Metric equivalents are given for general information only.
3. Interface shall meet the force to engage and disengage requirements in accordance with DSCC drawing 94008.
4. EMI shield configuration optional: Shall not prevent proper engagement of detent required. To meet mechanical and electrical requirements of DSCC drawing 94008.
5. Form and dimension of outer conductor to meet electrical and mechanical requirements.

FIGURE 326-1a. Interface, series SMP, socket contact (cabled connector).

NEW PAGE

MIL-STD-348A
 NOTICE 5



| Inches | mm | Inches | mm |
|--------|-------|--------|------|
| .001 | 0.03 | .045 | 1.14 |
| .0015 | 0.038 | .054 | 1.37 |
| .002 | 0.05 | .055 | 1.40 |
| .003 | 0.08 | .110 | 2.79 |
| .008 | 0.20 | .116 | 2.95 |
| .015 | 0.38 | .125 | 3.18 |
| .0220 | 0.056 | .144 | 3.66 |
| .035 | 0.89 | | |

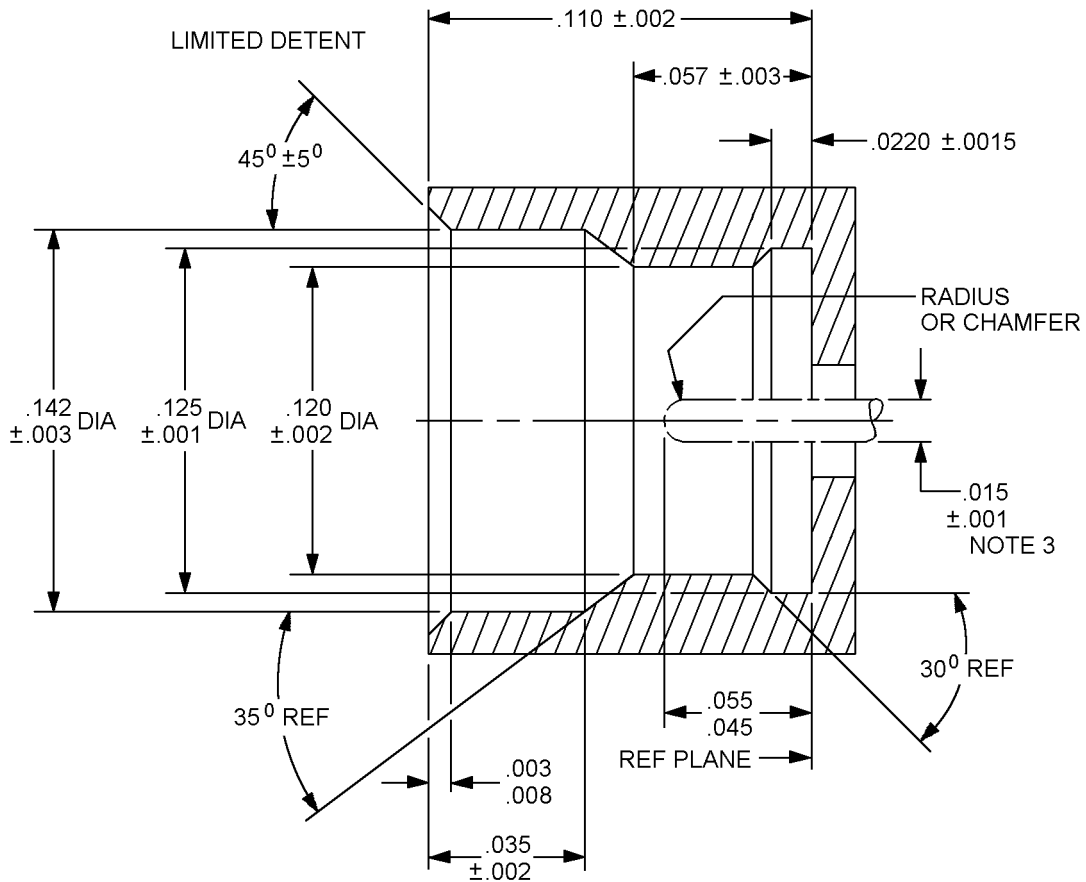
NOTES:

1. Dimensions are in inches.
2. Metric equivalents are given for information only.
3. Pin may not be supplied with shroud, refer to the applicable specification.

FIGURE 326-2. Interface, series SMP, pin contact, full detent.

SUPERSEDES PAGE 326.2 OF NOTICE 3

MIL-STD-348A
 NOTICE 5



| Inches | mm | Inches | mm |
|--------|-------|--------|------|
| .001 | 0.03 | .055 | 1.40 |
| .0015 | 0.038 | .057 | 1.45 |
| .002 | 0.05 | .110 | 2.79 |
| .003 | 0.08 | .120 | 3.05 |
| .008 | 0.20 | .125 | 3.18 |
| .015 | 0.38 | .142 | 3.61 |
| .0220 | 0.056 | | |
| .035 | 0.89 | | |
| .045 | 1.14 | | |

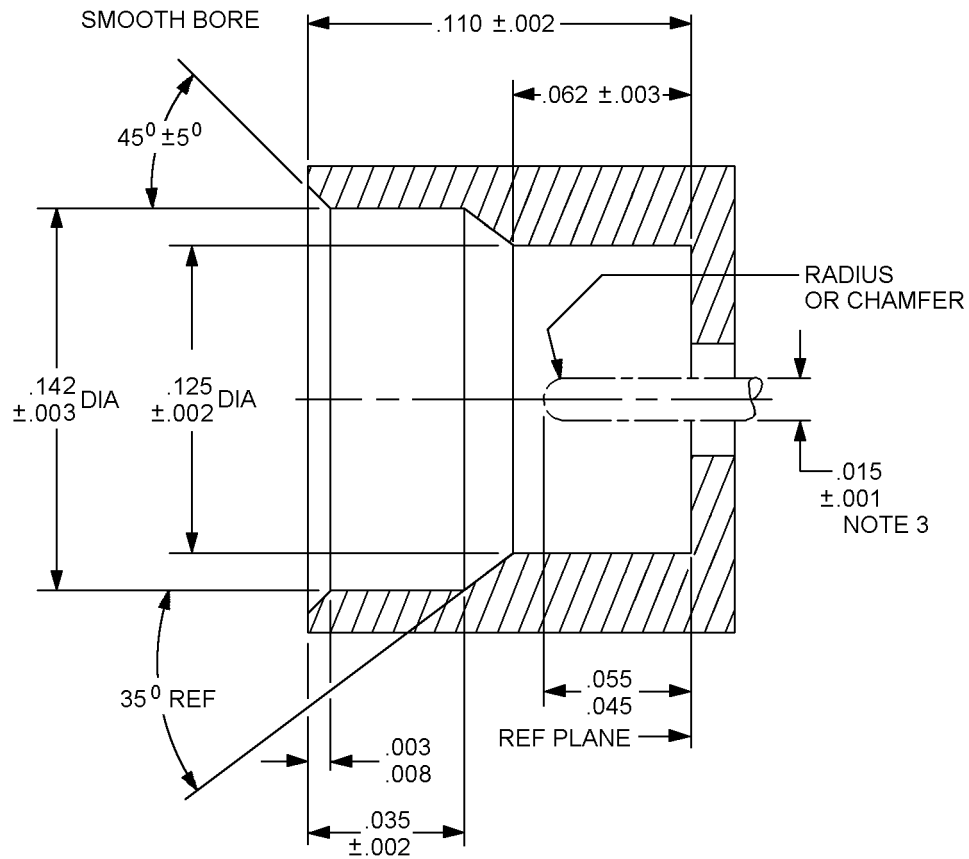
NOTES:

1. Dimensions are in inches.
2. Metric equivalents are given for information only.
3. Pin may not be supplied with shroud, refer to applicable specification.

FIGURE 326-3. Interface, series SMP, pin contact, limited detent.

SUPERSEDES PAGE 326.3 OF NOTICE 3

MIL-STD-348A
 NOTICE 5



| Inches | mm | Inches | mm |
|--------|------|--------|------|
| .001 | 0.03 | .054 | 1.37 |
| .002 | 0.05 | .055 | 1.40 |
| .003 | 0.08 | .110 | 2.79 |
| .008 | 0.20 | .125 | 3.18 |
| .015 | 0.38 | .142 | 3.61 |
| .035 | 0.89 | .144 | 3.66 |
| .045 | 1.14 | | |

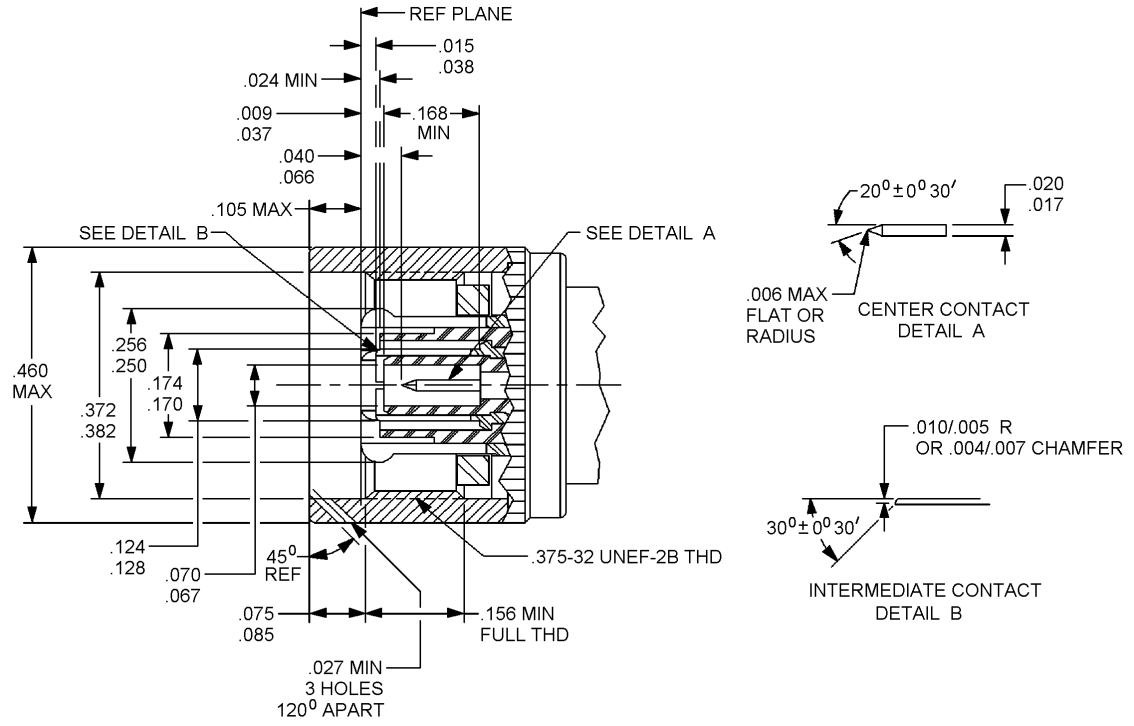
NOTES:

1. Dimensions are in inches.
2. Metric equivalents are given for information only.
3. Pin may not be supplied with shroud, refer to applicable specification.

FIGURE 326-4. Interface, series SMP, pin contact, smooth bore.

SUPERSEDES PAGE 326.4 OF NOTICE 3

MIL-STD-348A
 NOTICE 5

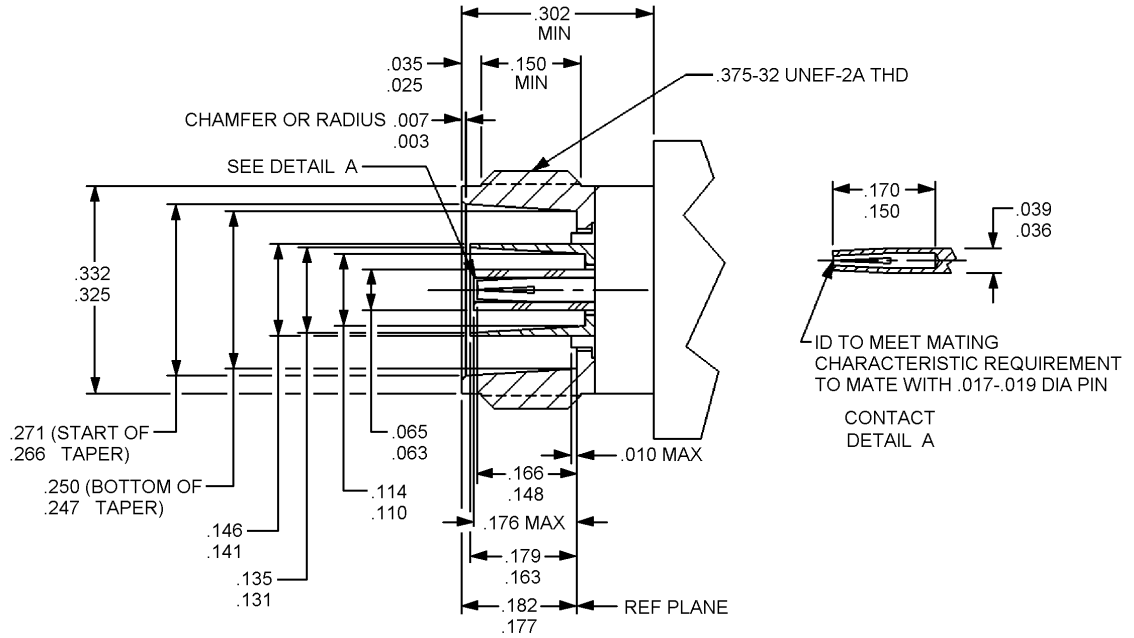


| Inches | mm | Inches | mm |
|--------|------|--------|-------|
| .004 | 0.10 | .070 | 1.78 |
| .005 | 0.13 | .075 | 1.91 |
| .006 | .015 | .085 | 2.16 |
| .007 | 0.18 | .105 | 2.66 |
| .009 | 0.23 | .124 | 3.15 |
| .010 | 0.25 | .128 | 3.25 |
| .015 | 0.38 | .156 | 3.96 |
| .017 | 0.43 | .168 | 4.27 |
| .020 | 0.51 | .170 | 4.32 |
| .024 | 0.61 | .174 | 4.42 |
| .037 | 0.94 | .250 | 6.35 |
| .038 | 0.97 | .256 | 6.50 |
| .040 | 1.02 | .372 | 9.45 |
| .066 | 1.68 | .382 | 9.70 |
| .067 | 1.70 | .460 | 11.68 |

FIGURE 327-1. Threaded plug – pin center contact (DBA).

NEW PAGE

MIL-STD-348A
 NOTICE 5

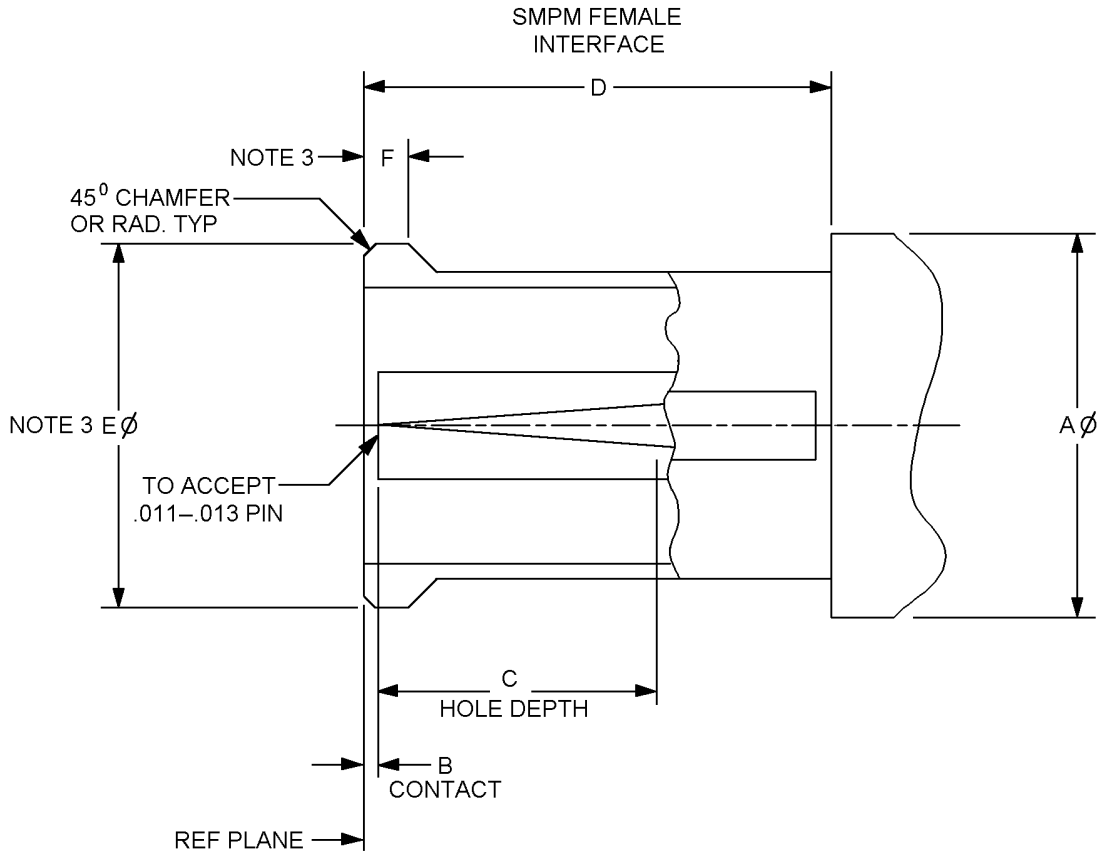


| Inches | mm | Inches | mm |
|--------|------|--------|------|
| .003 | 0.07 | .148 | 3.76 |
| .007 | 0.18 | .150 | 3.81 |
| .010 | 0.25 | .163 | 4.14 |
| .017 | 0.43 | .166 | 4.22 |
| .019 | 0.49 | .170 | 4.32 |
| .025 | 0.64 | .176 | 4.47 |
| .035 | 0.89 | .177 | 4.50 |
| .036 | 0.91 | .179 | 4.55 |
| .039 | 0.99 | .182 | 4.62 |
| .063 | 1.60 | .247 | 6.27 |
| .065 | 1.65 | .250 | 6.35 |
| .110 | 2.79 | .266 | 6.76 |
| .114 | 2.90 | .271 | 6.88 |
| .131 | 3.33 | .302 | 7.67 |
| .135 | 3.43 | .325 | 8.26 |
| .141 | 3.58 | .332 | 8.43 |
| .146 | 3.71 | | |

FIGURE 327-2. Threaded plug - socket center contact (DBA).

NEW PAGE

MIL-STD-348A
 NOTICE 5



FEMALE

| LTR | Minimum | | Maximum | |
|-----|---------|------|---------|------|
| | Inches | mm | Inches | mm |
| A∅ | --- | --- | .110 | 2.79 |
| B | .000 | 0.00 | .008 | 0.20 |
| C | .050 | 1.27 | --- | --- |
| D | .068 | 1.73 | --- | --- |
| E∅ | --- | --- | .095 | 2.41 |
| F | --- | --- | .023 | 0.58 |

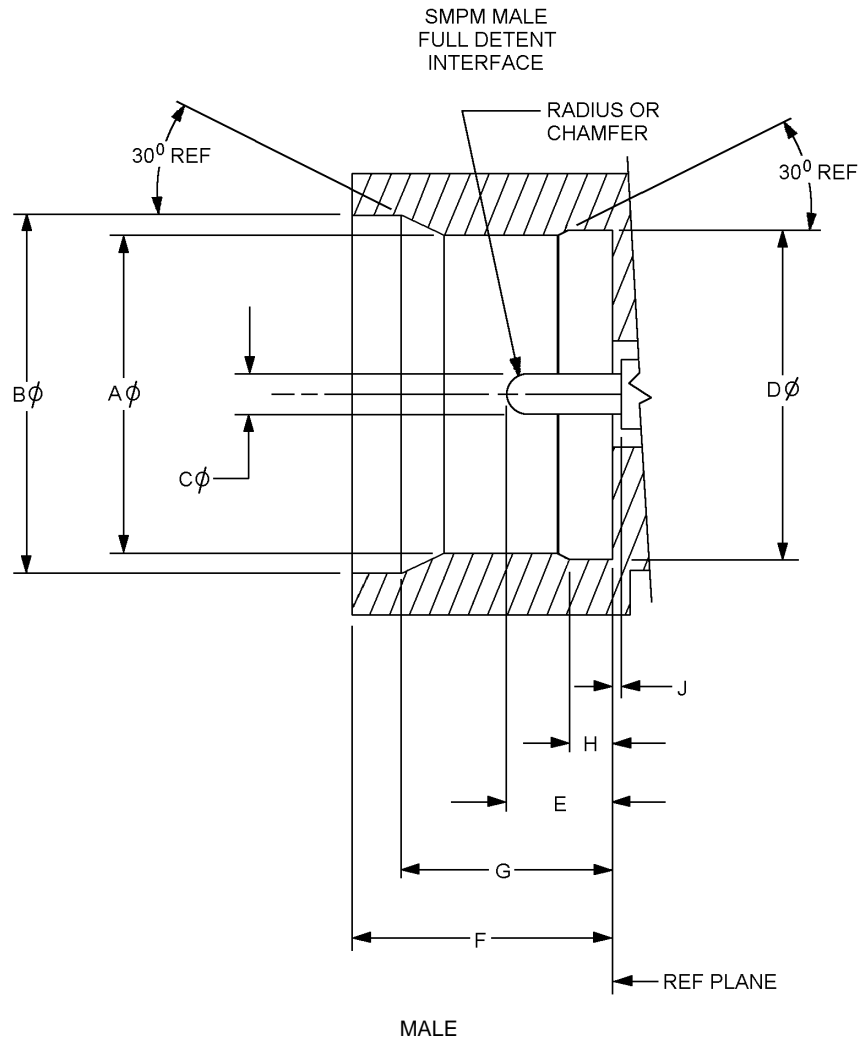
NOTES:

1. Dimensions are in inches.
2. Metric equivalents are given for general information only.
3. Features to meet mechanical/electrical requirements when mated with SMPM male interface.

FIGURE 328-1. SMPM female interface.

NEW PAGE

MIL-STD-348A
 NOTICE 5



| LTR | Minimum | | Maximum | |
|-----|---------|------|---------|------|
| | Inches | mm | Inches | mm |
| A∅ | .083 | 2.11 | .085 | 2.16 |
| B∅ | .111 | 2.82 | .115 | 2.92 |
| C∅ | .011 | 0.28 | .013 | 0.33 |
| D∅ | .086 | 2.18 | .088 | 2.24 |
| E | .030 | 0.76 | .045 | 1.14 |
| F | .082 | 2.08 | .084 | 2.13 |
| G | .062 | 1.57 | .072 | 1.83 |
| H | .021 | 0.53 | .023 | 0.58 |
| J | .000 | 0.00 | ---- | --- |

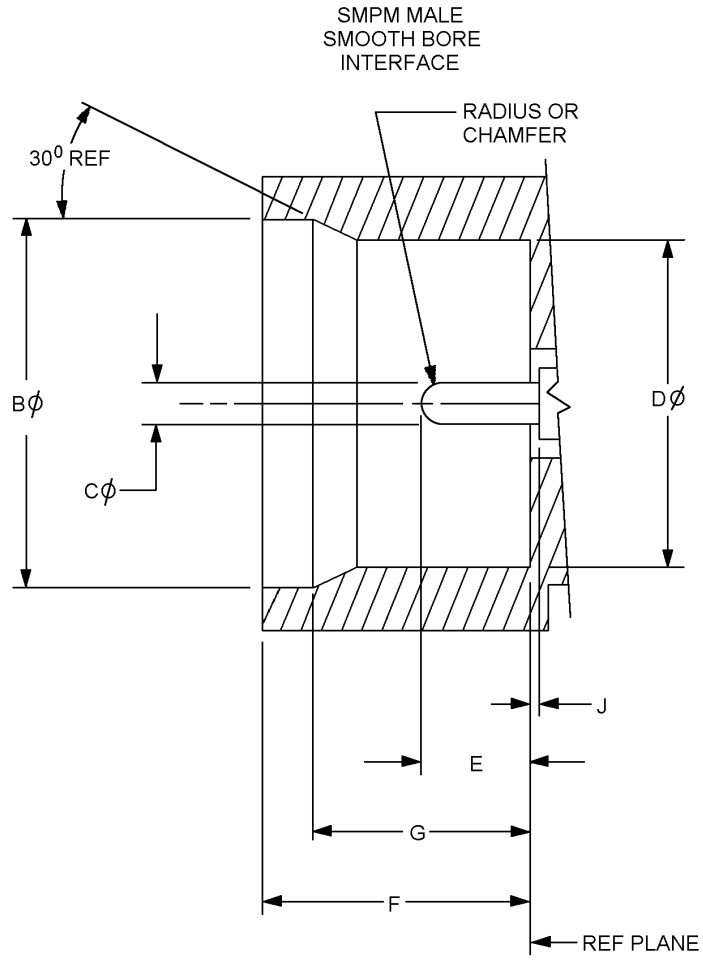
NOTES:

1. Dimensions are in inches.
2. Metric equivalents are given for general information only.

FIGURE 328.2. SMPM male full detent interface.

NEW PAGE

MIL-STD-348A
 NOTICE 5



MALE

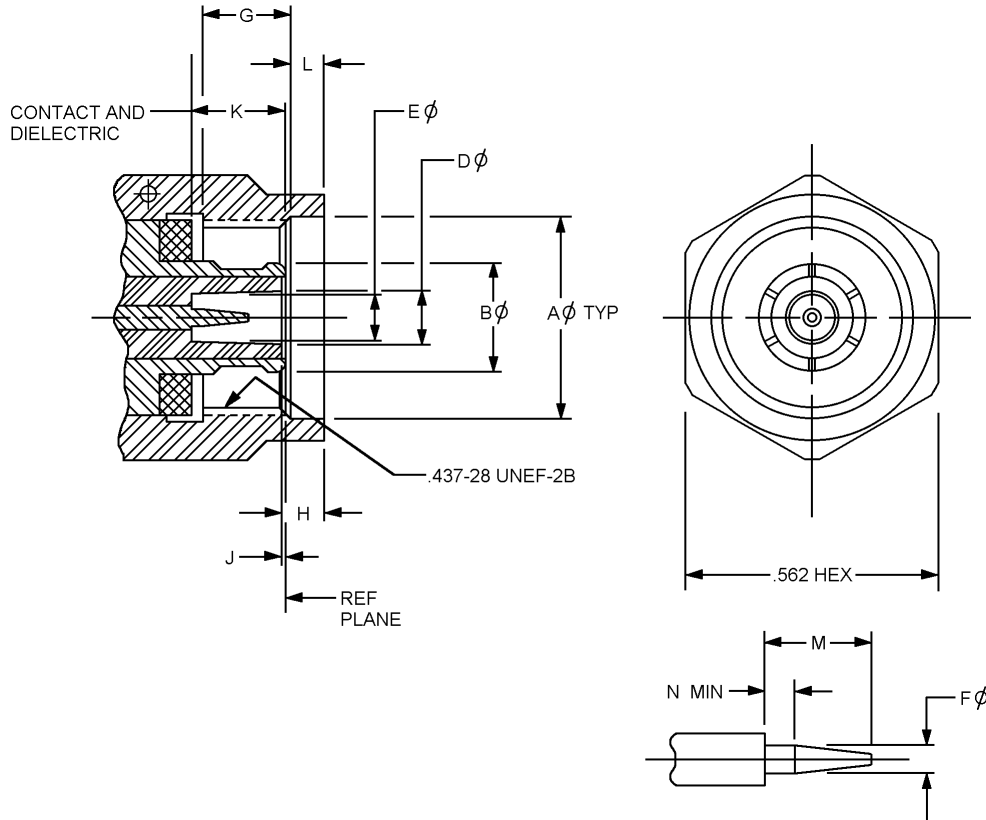
| LTR | Minimum | | Maximum | |
|-----|---------|------|---------|------|
| | Inches | mm | Inches | mm |
| BØ | .111 | 2.82 | .115 | 2.92 |
| CØ | .011 | 0.28 | .013 | 0.33 |
| DØ | .086 | 2.18 | .088 | 2.24 |
| E | .030 | 0.76 | .045 | 1.14 |
| F | .082 | 2.08 | .084 | 2.13 |
| G | .062 | 1.57 | .072 | 1.83 |
| J | .000 | 0.00 | ---- | --- |

NOTES:

1. Dimensions are in inches.
2. Metric equivalents are given for general information only.

FIGURE 328-3. SMPM male smooth bore interface.

**MIL-STD-348A
 NOTICE 5**



| LTR | MALE | |
|-----|------------------------|------------------------|
| | Minimum Inches (mm) | Maximum Inches (mm) |
| ∅A | .440 (11.18) | |
| ∅B | .242 (6.15) | .246 (6.25) |
| ∅D | .124 (3.15) | .126 (3.20) |
| ∅E | .114 (2.90) | .116 (2.95) |
| ∅F | .0335 (0.850) | .0345 (0.876) |
| G | .175 (4.45) | .215 (5.46) |
| H | .074 (1.88) | .096 (2.44) |
| J | .000 | .004 (0.10) |
| K | .209 (5.31) | .212 (5.38) |
| L | .065 (1.65) | .085 (2.16) |
| M | .120 (3.05) | .130 (3.30) |
| N | .030 (0.76) | .040 (1.02) |

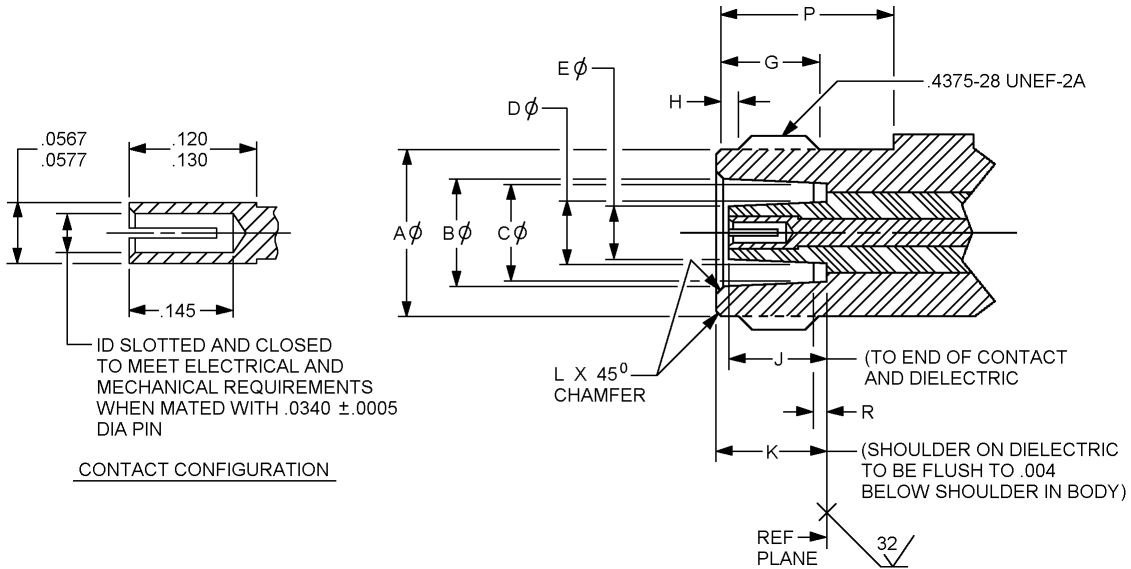
NOTES:

1. When fully engaged, the two reference planes must coincide with metals contacts.
2. Metric equivalents are given for general information only.

FIGURE 329-1. Interface series TK, pin contact.

NEW PAGE

MIL-STD-348A
 NOTICE 5



NOTES:

1. When fully engaged, the two reference planes must coincide with metals contacts.
2. Metric equivalents are given for general information only.

FIGURE 329-2. Interface series TK, socket contact.

NEW PAGE