

**INCH-POUND**

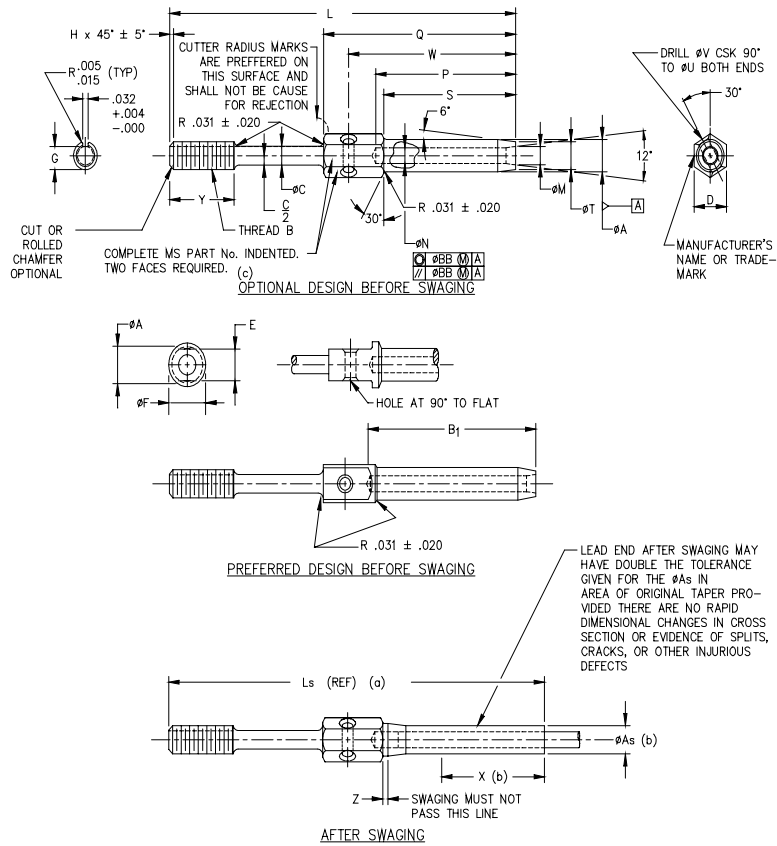
MS21260L  
 10 January 2001  
 SUPERSEDING  
 MS21260K  
 30 October 1999

**MILITARY SPECIFICATION SHEET**

**TERMINAL, WIRE ROPE, SWAGING STUD**

This specification is approved for use by all Departments and Agencies of the Department of Defense.

The requirements for acquiring the product described herein shall consist of this specification sheet and the issue of the following specification listed in that issue of the Department of Defense Index of Specifications and Standards (DoDISS) specified in the solicitation: MIL-DTL-781, QPL-781.



- NOTES: (a) Reference dimensions are for design purposes only and are not an inspection requirement.  
 (b) Swaged terminals shall conform to ØAs' for length X.  
 (c) For terminal sizes -2 through -5, use basic part number only, example: MS21260.

**FIGURE 1. Terminal, wire rope, swaging stud.**

MS21260L

TABLE I. Part numbers and dimensions.

MS part number		Wire rope diameter		Minimum breaking strength lb <sub>1</sub> /	Thread B UN-3A UNF-3A	ØA		ØAs	
Corrosion resistant steel		Nominal reference	Minimum			ØA	ØAs	+ .000 - .005	
RH thread	LH thread								
MS21260L2RH	MS21260L2LH	1/16	.062	480	.1380 (# 6)-40	.160			
MS21260S2RH	MS21260S2LH								
MS21260L3RH	MS21260L3LH								
MS21260S3RH	MS21260S3LH	3/32	.093	920	.1900 (#10)-32	.218			
MS21260L4RH	MS21260L4LH	1/8	.125	2000	.2500 (1/4)-28	.250			
MS21260S4RH	MS21260S4LH								
MS21260L5RH	MS21260L5LH								
MS21260S5RH	MS21260S5LH	5/32	.156	2800		.297			
MS21260L6RH	MS21260L6LH	3/16	.187	4200	.3125 (5/16)-24	.359			
MS21260S6RH	MS21260S6LH								
MS21260-7RH	MS21260-7LH								
MS21260-8RH	MS21260-8LH	1/4	.250	7000	.3750 (3/8)-24	.494			
MS21260-9RH	MS21260-9LH	9/32	.281	8000	.4375 (7/16)-20	.563			
MS21260-10RH	MS21260-10LH	5/16	.312	9800	.5000 (1/2)-20	.635			
MS21260-12RH	MS21260-12LH	3/8	.375	14400	.5625 (9/16)-18	.703			
MS21260-14RH	MS21260-14LH	7/16	.437	17600	.6250 (5/8)-18	.781			
MS21260-16RH	MS21260-16LH	1/2	.500	22800	.6250 (5/8)-18	.844			
MS21260-18RH	MS21260-18LH	9/16	.562	28500	.7500 (3/4)-16	.984			
MS21260-20RH	MS21260-20LH	5/8	.625	35000	.8750 (7/8)-14	1.109			
MS21260-24RH	MS21260-24LH	3/4	.750	49600	1.0000 (1)-12	1.359			
MS21260-28RH	MS21260-28LH	7/8	.875	66500	1.1250 (1 1/8)-12	1.593			
MS21260-32RH	MS21260-32LH	1	1.000	85400	1.2500 (1 1/4)-12	1.812			

1/ To achieve the minimum breaking strength, for the terminal test only, a galvanized carbon steel wire rope shall be used.

TABLE I. Part numbers and dimensions - Continued.

MS part number		B <sub>1</sub>	ØC +.006 -.000	D	E +.000 -.010	ØF	G		H	
Corrosion resistant steel							Maximum	Minimum	Maximum	Minimum
RH thread	RH thread									
MS21260L2RH	MS21260L2LH	1.042	.092	.188	.156	.188	.1139	.1094	.031	
MS21260S2RH	MS21260S2LH									
MS21260L3RH	MS21260L3LH									
MS21260S3RH	MS21260S3LH	1.261	.133	.250	.187	.250	.1638	.1568		
MS21260L4RH	MS21260L4LH	1.511	.195	.313	.250	.313	.2224	.2152	.047	.015
MS21260S4RH	MS21260S4LH									
MS21260L5RH	MS21260L5LH									
MS21260S5RH	MS21260S5LH	1.761								
MS21260L6RH	MS21260L6LH	2.011	.245	.375	.312	.375	.2830	.2754		
MS21260S6RH	MS21260S6LH									
MS21260-7RH	MS21260-7LH									
MS21260-8RH	MS21260-8LH	2.511		.500	.438	.500				
MS21260-9RH	MS21260-9LH	2.761	.361	.625	.563	.625	.4052	.4072		
MS21260-10RH	MS21260-10LH	3.011	.406	.688	.625	.688	.4678	.4597		
MS21260-12RH	MS21260-12LH	3.511	.476	.750	.688	.750	.5285	.5201		
MS21260-14RH	MS21260-14LH	4.011	.538	.812	.750	.812	.5909	.5826	.063	.031
MS21260-16RH	MS21260-16LH	4.698		.875	.812	.875				
MS21260-18RH	MS21260-18LH	5.011	.654	1.000	.875	1.000	.7137	.7050		
MS21260-20RH	MS21260-20LH	5.511	.768	1.125	1.000	1.125	.8558	.8266	.078	.048
MS21260-24RH	MS21260-24LH	6.511	.893	1.438	1.125	1.438	.9608	.9516		
MS21260-28RH	MS21260-28LH	7.166	1.002	1.625	1.438	1.625	1.0819	1.0772		
MS21260-32RH	MS21260-32LH	8.229	1.128	1.875	1.625	1.812	1.2069	1.1972	.094	.062

MS21260L

TABLE I. Part numbers and dimensions - Continued.

Dash number (size)	L +/- .063	Ls reference	ØM		ØN		P		Q +.031 -.016	S +.062 -.000	ØT		
L2	3.491	3.67	.090	+.010 -.000	.078	+.005 -.000	1.042	+.031 -.000	1.319	.969	.138	+.000 -.005	
S2	2.616	2.79					.109		1.261	1.581	1.188		.190
L3	3.738	3.86	.119				.141		1.511	1.863	1.438		.219
S3	2.863	2.98							.172	1.761	2.157		1.688
L4	4.020	4.28	.154				.203		2.011	2.455	1.938		.313
S4	3.145	3.40							.234	2.261	2.757		2.188
L5	4.314	4.66	.188		.265	2.511	3.061	2.438	.438				
S5	3.439	3.78				.297	2.761	3.385	2.688	.500			
L6	4.612	4.78	.223		.328	3.011	3.718	2.938	.563				
S6	3.737	3.90			.390	3.511	4.281	3.438	.625				
-7	4.914	5.21	.257		.468	4.011	4.812	3.938	.688				
-8	5.218	5.52	.291		.531	4.698	5.562	4.625	.750				
-9	5.542	5.90	.326		.594	5.011	6.000	4.938	.875				
-10	5.875	6.30	.360		.656	5.511	6.750	5.438	1.000				
-12	6.608	7.01	.430	+.012 -.000	.781	6.511	+.047 -.000	7.938	6.438	1.250	+.000 -.012		
-14	7.468	7.94	.514			.921		7.166	8.601	7.094		1.437	
-16	8.718	9.28	.584			1.046		8.229	9.844	8.156		1.625	
-18	9.188	9.78	.653										
-20	10.469	11.16	.722										
-24	12.188	12.76	.860		+.015 -.000								
-28	12.851	13.61	1.013										
-32	14.624	15.53	1.151										

TABLE I. Part numbers and dimensions - Continued.

Dash number (size)	ØU reference	ØV ±.005	W ±.016	X	Y ±.047 2/	Z	ØBB	
				Minimum		Minimum		
L2	.094	.063	1.174	.70	.375	.03	008 (.016 FIM)	
S2								
L3			1.411	.80	.500			
S3								
L4	.125	.098	1.682	1.05	.563			
S4								
L5			1.958	1.29	.625			
S5								
L6			2.237	1.31	.750			
S6								
-7			2.518	1.55	.875			
-8			2.784	1.70				
-9			3.076	1.89	1.000			
-10			3.326	2.06				
-12			3.828	3.12	1.125			
-14			4.375	3.57	1.250			
-16	.188	.125	5.093	4.31	2.000			
-18			5.468	4.51		1.500		
-20			6.093	5.04		1.750		
-24			7.188	5.80				
-28			7.846	6.31				
-32			9.000	7.26		2.250		

2/ Includes last full thread engagement.

MS21260L

REQUIREMENTS:

1. Material: Material shall be in accordance with MIL-DTL-781
2. Finish: Finish shall be in accordance with MIL-DTL-781.
3. Threads: Threads shall be in accordance with FED-STD-H28/20.
4. Swage: Swage shall be in accordance with MIL-DTL-6117.
5. Tolerances: Unless otherwise specified, tolerances: decimals  $\pm .010$ , angles  $\pm 3^\circ$ .

NOTES:

1. Dimensions are in inches.
2. Remove all burrs and sharp edges. (See procurement specification for definition.)
3. Interpret drawing in accordance with ASME Y14.5M.
4. In the event of a conflict between the text of this document and the references cited herein, the text of this document takes precedence.
5. Unless otherwise specified, issues of reference documents are those in effect at the time of solicitation.
6. Interchangeability relationship: MS21260 parts can universally replace the canceled AN669 and NAS650 parts identified by the same dash number; but the canceled AN669 and NAS650 parts cannot replace the superseding MS21260 parts. MS21260 corrosion resistant steel parts can universally replace the canceled carbon and alloy steel parts identified by the same dash number.
7. Carbon and alloy steel parts are inactive for new design.

CHANGES FROM PREVIOUS ISSUE: Marginal notations are not used in this revision to identify changes with respect to the previous issue due to the extent of the changes.

Custodians:  
Army - AR  
Navy - AS  
Air Force - 99

Preparing activity:  
DLA - GS5  
(Project 1560-0286)

Reviewers:  
Army - CR4  
Navy - MC  
Air Force - 82